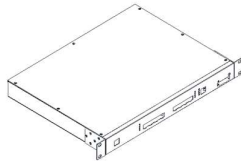


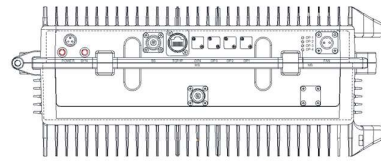
Multi Band Digital Fiber Optic Repeater Model: SZALO-DIGITAL-MU/RU-B1B3B4B77

Main Features

- Support 2G, 3G,4G and 5G technologies
- Supports 1800 Mhz (B3), 2100MHz (B1) for GSM,DCS,WCDMA and LTE (FDD)
- Supports 2500- 2600(Mhz) (B41) and 3700-3900 (Mhz) (B77) for 5G/NR (TDD)
- Small size and easy installation.



Main Unit



Remote Unit

Electrical Specifications

Parameter	Index requirements		Remark
	Downlink	Uplink	
Frequency Range (MHz)	1805-1880	1710-1785	For GSM/DCS/WCDMA/LTE (FDD)
	2110-2170	1920-1980	
	2500-2600	2500-2600	For 5G-NR (TDD)
	3700-3800	3700-3800	
	3800-3900	3800-3900	
Maximum output power (dBm)	43±2	-10±2	
Maximum Gain (dB)	50±3	50±3	
Attenuation Range (dB)	0~30	0~30	
Attenuation adjustment step (dB)	1	1	
Attenuation adjustment error (dB)	≤±1.5dB		
ALC(dB)	≤ ±2.0	≤ ±2.0	
Maximum lossless input level (dBm)	10	-10	
Out-of-band suppression	5.0 ≤ f_offset_CW < 10.0 MHz ≥30dB		
	10.0 MHz ≤ f_offset_CW ≥50dB		
Spurious Emission	9kHz ~ 1GHz: ≤-36dBm		
	1GHz ~ 12.75GHz: ≤-30dBm		
Frequency Error	≤ ±0.01ppm		
System Delay	≤ 6		
In-band ripple (dB)	≤±3.0		Within effective bandwidth
VSWR	Downlink input / Uplink output: ≤1.8		
	Downlink output / Uplink input: ≤1.6		
EVM	64QAM≤6%		
	256QAM:≤3.5%		
Delay Adjustment	After the delay adjustment, the delay between the relay terminal and any remote terminal connected to it is close, the delay difference between adjacent remote terminals is ≤2us, and the adjustable range is not less than 50us.		
ACPR (dBc)	±20MHz	-40	Peak-to-average ratio 8.0
	±20MHz	-45	
Input impedance(Ω)	50		

Mechanical Specifications

Supply voltage (V)	AC165-300V
Power consumption	MainUnit: ≤80W
	Remote Unit: ≤1200W
Equipment size (mm)	MainUnit: 329*429*44
	Remote Unit: 410*490*187
RF connector	Main Unit: 5 x 4.3-10 (Female)
	Remote Unit: 1 x 4.3-10 (Female)
Weight (kg)	MainUnit: ≤15
	Remote Unit: ≤35
Optical output power (dBm)	≥-9
Allowable optical path loss (dB)	≥15
Optical connector type (Dual-fiber transmission)	Main Unit: 8 x LC/UPC
	Remote Unit: 4 x FC/APC

Environmental Specifications

Waterproof level	MainUnit: IP30
	Remote Unit: IP65
Operating temperature	Indoor: -10~+55°C
	Outdoor: -40~+55°C
Networking	Supports 6-level chain networking, 4-port star networking, and mixed networking